

DFIS

World's Most Versatile Expeditionary Infrastructure System



PRODUCT

DFIS (Deployable Force Infrastructure Solutions) provides logistically lean expeditionary infrastructure to support humanitarian, military and logistic operations.

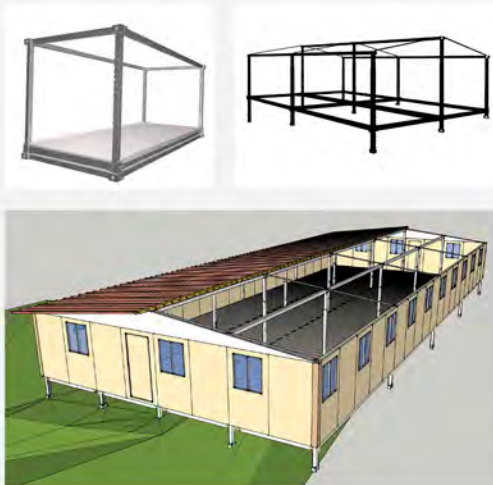
DFIS is a product of MICEBS Pty Limited.

DFIS is fast to deploy, can be erected by hand and requires little or no site preparation.

DFIS can be erected on level or sloping ground.

DFIS provides a set of reconfigurable building components to erect robust shelters with clean, level and safe working areas, clear of contaminated ground or water.

DFIS provides the building blocks for Austere bases to support land combat operations.



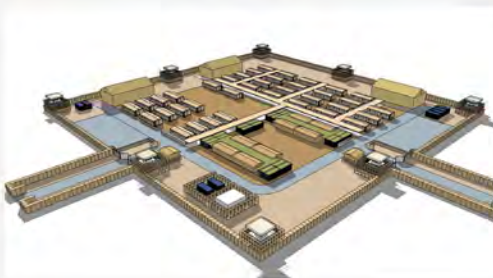
STATUS

DFIS is at TRL 8/9 for shelter under US DOD market readiness classifications.

DFIS has been deployed with the Australian Army Engineers to support domestic humanitarian operations in remote North East Queensland.

DFIS has been assessed by the United Nations Development Programme for use in humanitarian response operations.

DFIS has been assessed by Red Cross as meeting the requirements for housing of refugees, displaced persons and for support facilities.



CAPABILITY INFORMATION

DFIS IP is protected globally.

Up to 170m² of structure and floor can be shipped in a single 20' ISO shipping container or DFIS components can be used to form its own container.

DFIS provides a leaner logistics package at a better value for money than any similar product on the market today.

The DFIS structural frame and elevated floor plate can be walled and roofed with either fabric for rapid deployment or solid walls/roof for more permanent infrastructure. Fabric walls can be upgraded to solid walls in the field with minimum effort.

DFIS units can be hardened to meet NATO ballistic protection standards.



COMPANY CONTACTS

MICEBS Pty. Limited

Brigadier (R) Rod West, CSC

Mr Paul Coupe

Address:

Southport Qld. 4215 Australia

Mobile: +61 411 954 520

Email: admin@micebs.com

MICEBS

World's Most Flexible Disaster Response and Transitional Shelter System



PRODUCT

MICEBS is a lean logistical building system where the MICEBS container provides all the components of our building system, they can be assembled as a container for shipping or to form an earthquake and cyclone proof core for Transitional Shelter.

Fast to deploy, erected by hand by two people in a few hours, MICEBS can be erected on level or sloping ground with little or no site preparation.

MICEBS allows local communities to develop culturally appropriate responses. Designed as a logistics container, which can transition into robust, sustainable community structures.

MICEBS can be stockpiled and assembled by trained teams or locals with minimal training. They are earthquake and cyclone (hurricane) resistant and have the ability to immediately provide disaster survivors and their responders with a level space above the ground, away from contaminated ground water, vermin and water-borne diseases.

STATUS

MICEBS is at TRL 8/9 for shelter under US DOD market readiness classifications. MICEBS has been deployed with the Australian Army Engineers to support domestic humanitarian operations in remote North East Queensland.



MICEBS has been assessed by the United Nations Development Programme for use in humanitarian response operations.

MICEBS has been assessed by Red Cross as meeting the requirements for housing of refugees, displaced persons and for support facilities. response operations.

CAPABILITY INFORMATION

A 20' MICEBS Disaster Response Container contains all the components for the construction of 4 x 30 sqm buildings. Modules can be joined together to provide larger shelter units.

The MICEBS structural frame and elevated floor plate forms the first response to a disaster. Initially covered with fabric, it can be upgraded with minimum effort by the users to provide a truly Transitional Shelter Solution.

Delivered to strengthen an existing community before a disaster or to a disaster zone from central depots as required using either road, ship or helicopter, the community can decide what MICEBS configuration is required, where the best location is for erection and who will do the build.



COMPANY CONTACTS

MICEBS Pty. Limited

Brigadier (R) Rod West, CSC

Mr Paul Coupe

Address:

Southport Qld. 4215 Australia

Mobile: +61 411 954 520

Email: admin@micebs.com